



hnp and partners, architects p.c. the great building 44 broad st. n.w. suite 310 atlanta, georgia 30303 (404) 659-0191

PROFESSIONAL SEALS



DRAWING TITLE

FLOOR PLAN

DRAWN C.U.S.

CHECKED E.H.

DATE 11/1/88

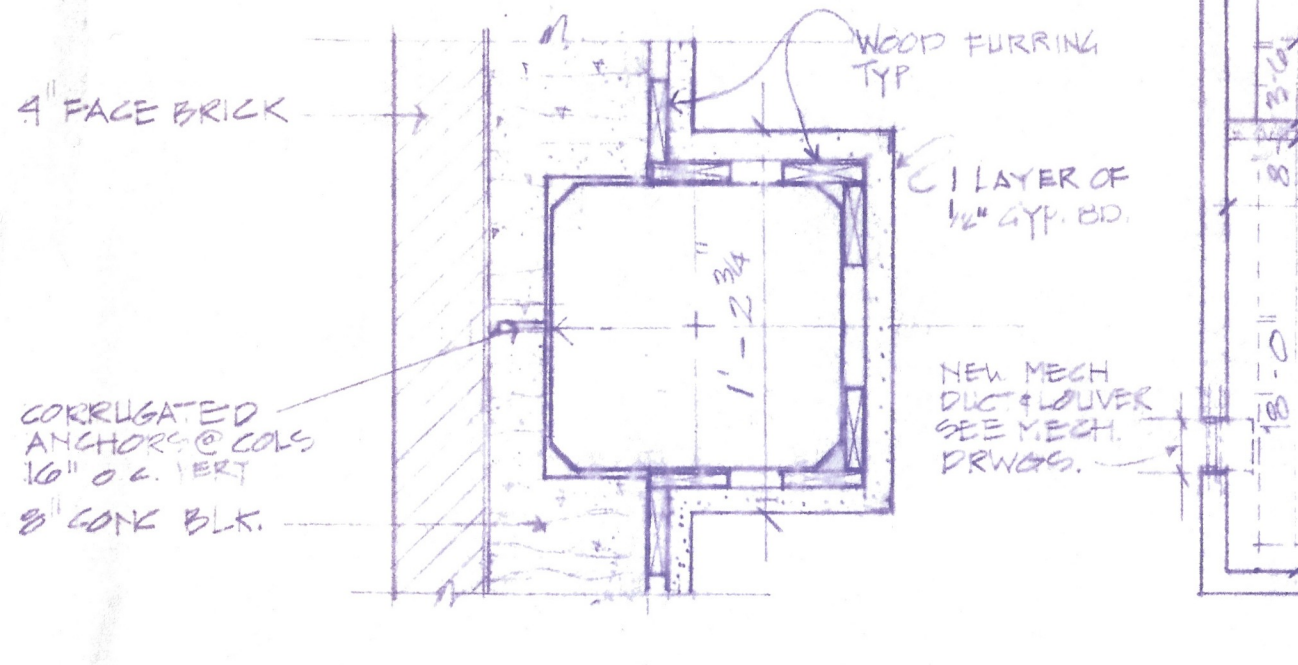
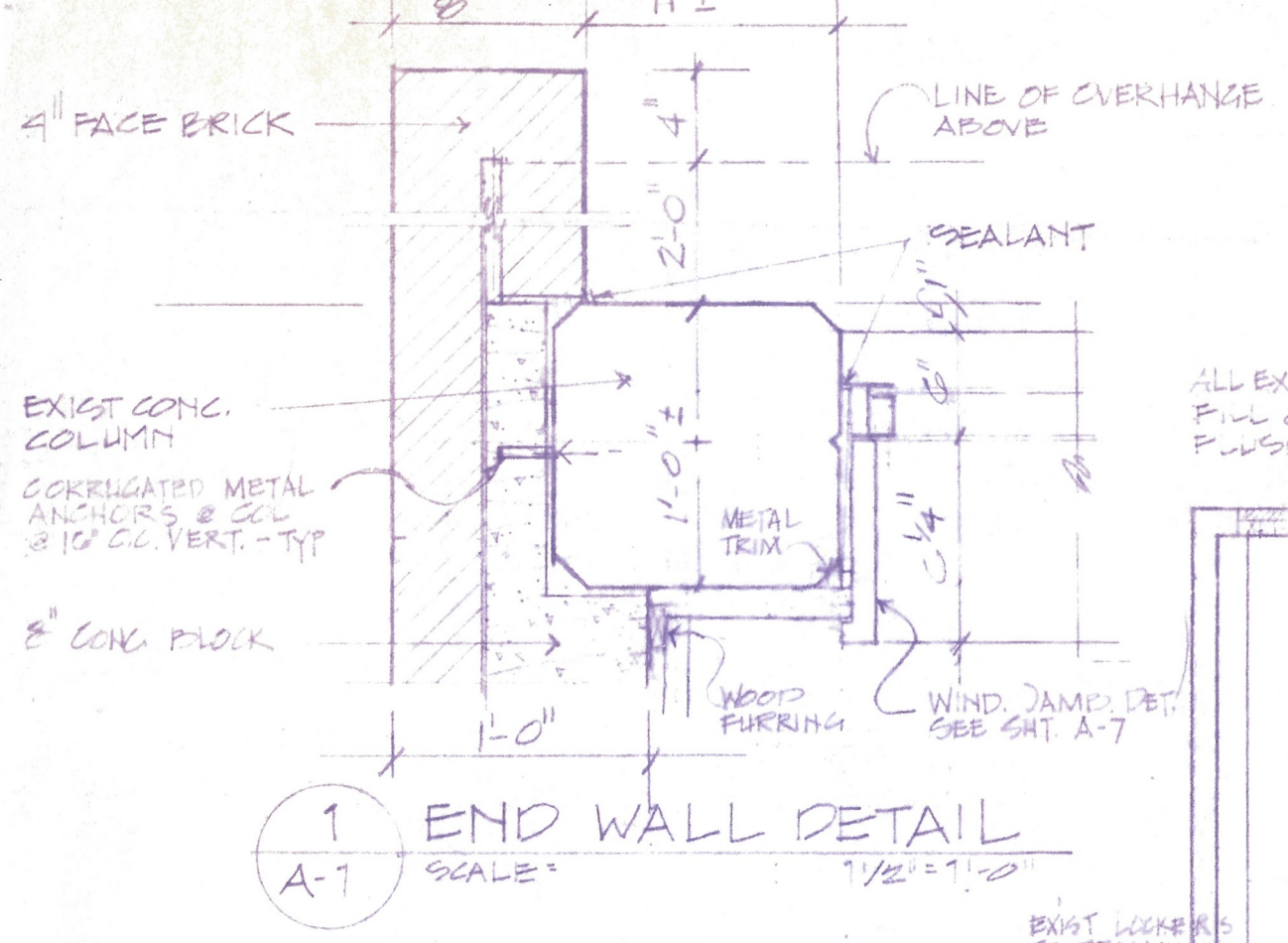
PROJECT NO. 8007.1A

SCALE AS NOTED

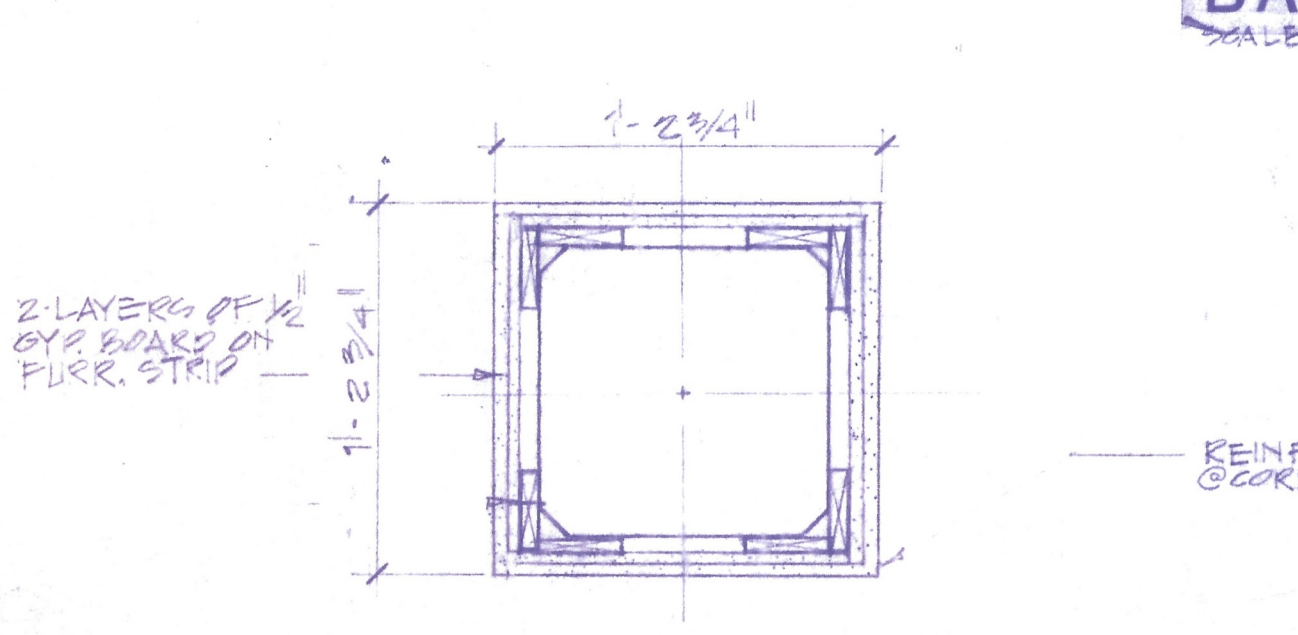
DRAWING NO.

A - 1

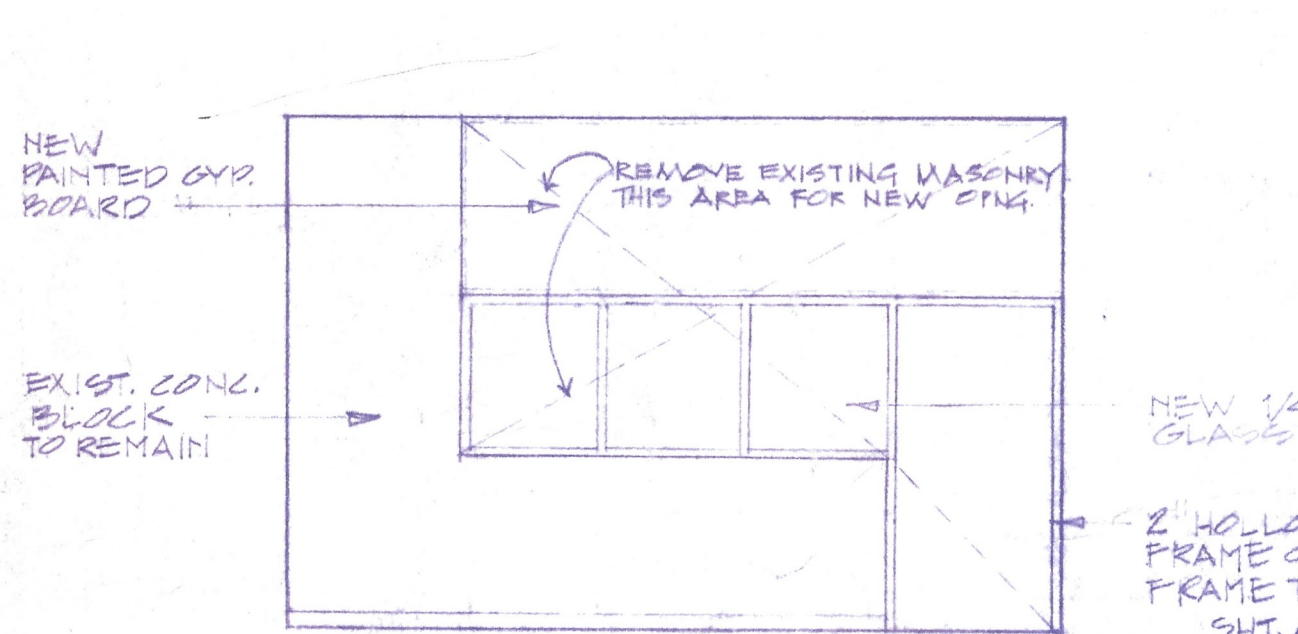
OF SHEETS



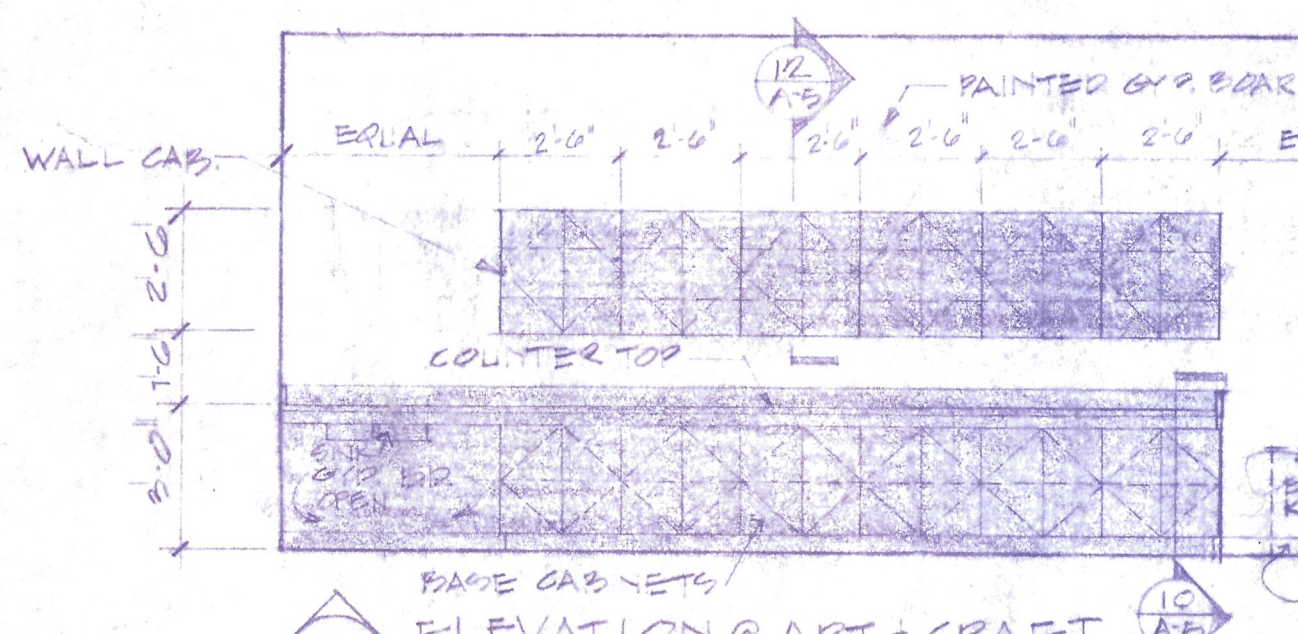
1 END WALL DETAIL SCALE: 1/2\"/>



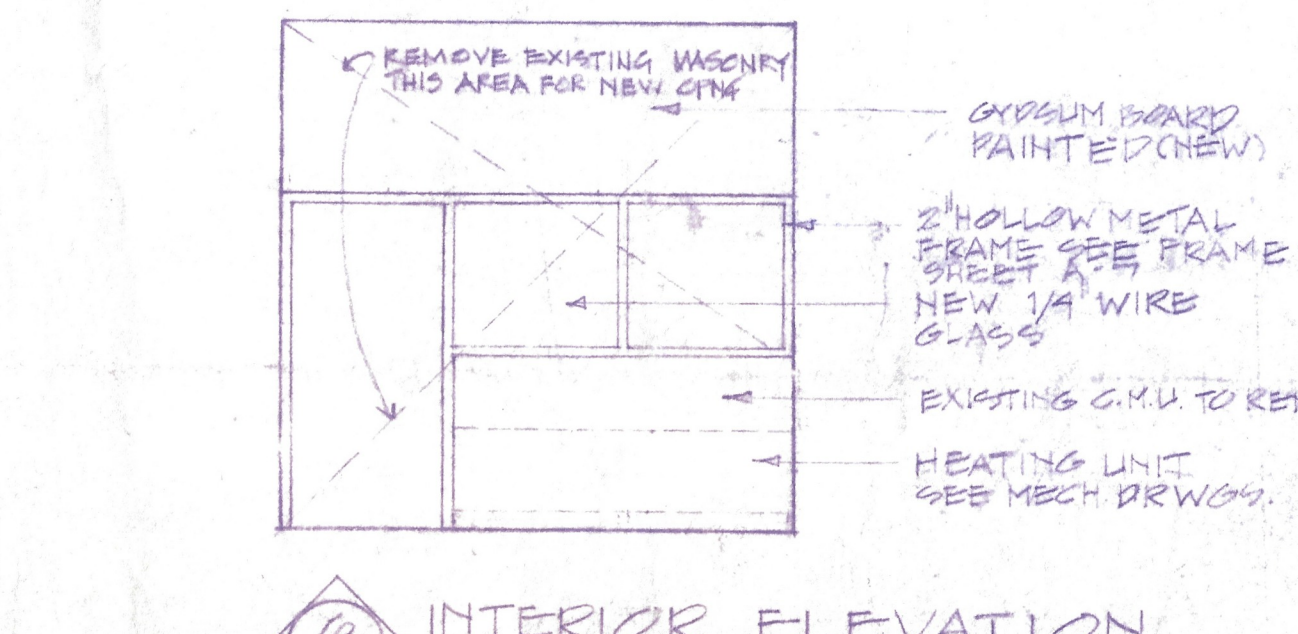
2 COLUMN DETAIL SCALE: 1/2\"/>



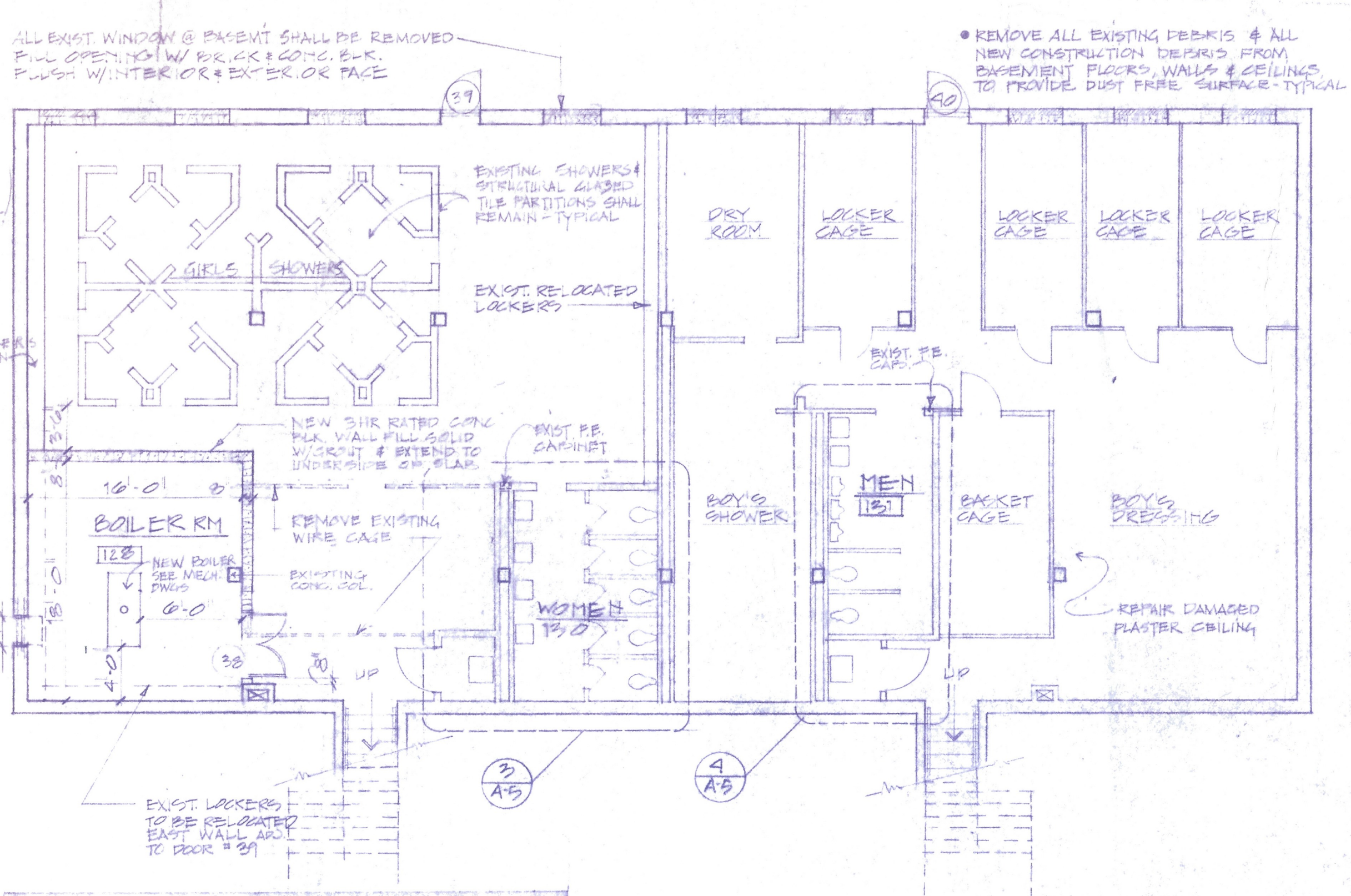
3 OFFICE ELEVATION SCALE: 1/4\"/>



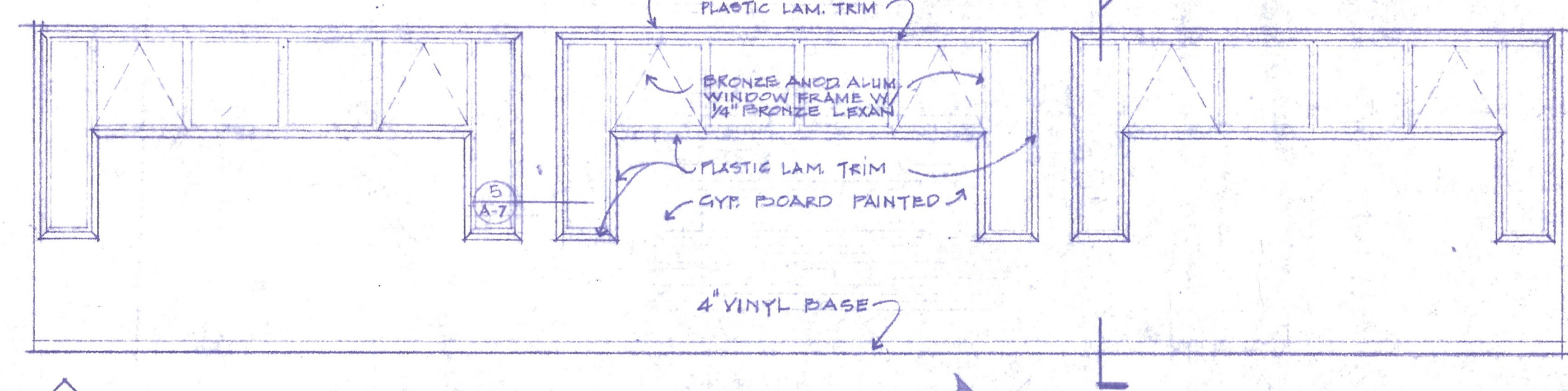
4 ELEVATION @ ART & CRAFT SCALE: 1/4\"/>



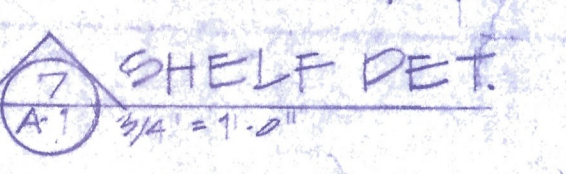
5 INTERIOR ELEVATION SCALE: 1/4\"/>



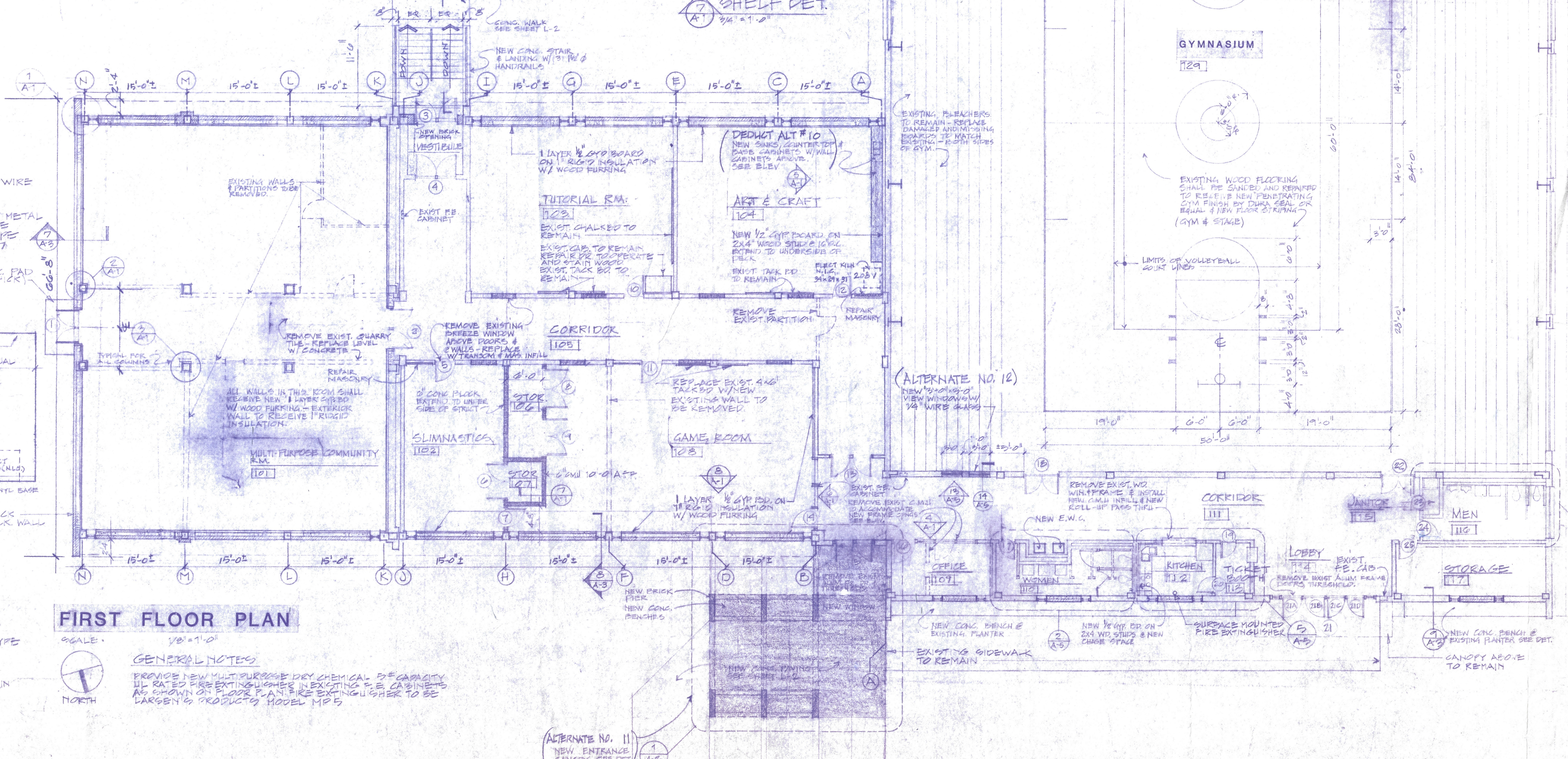
BASEMENT FLOOR PLAN SCALE: 1/8\"/>



6 WINDOW WALL ELEVATION @ GAME ROOM #108 SCALE: 1/4\"/>



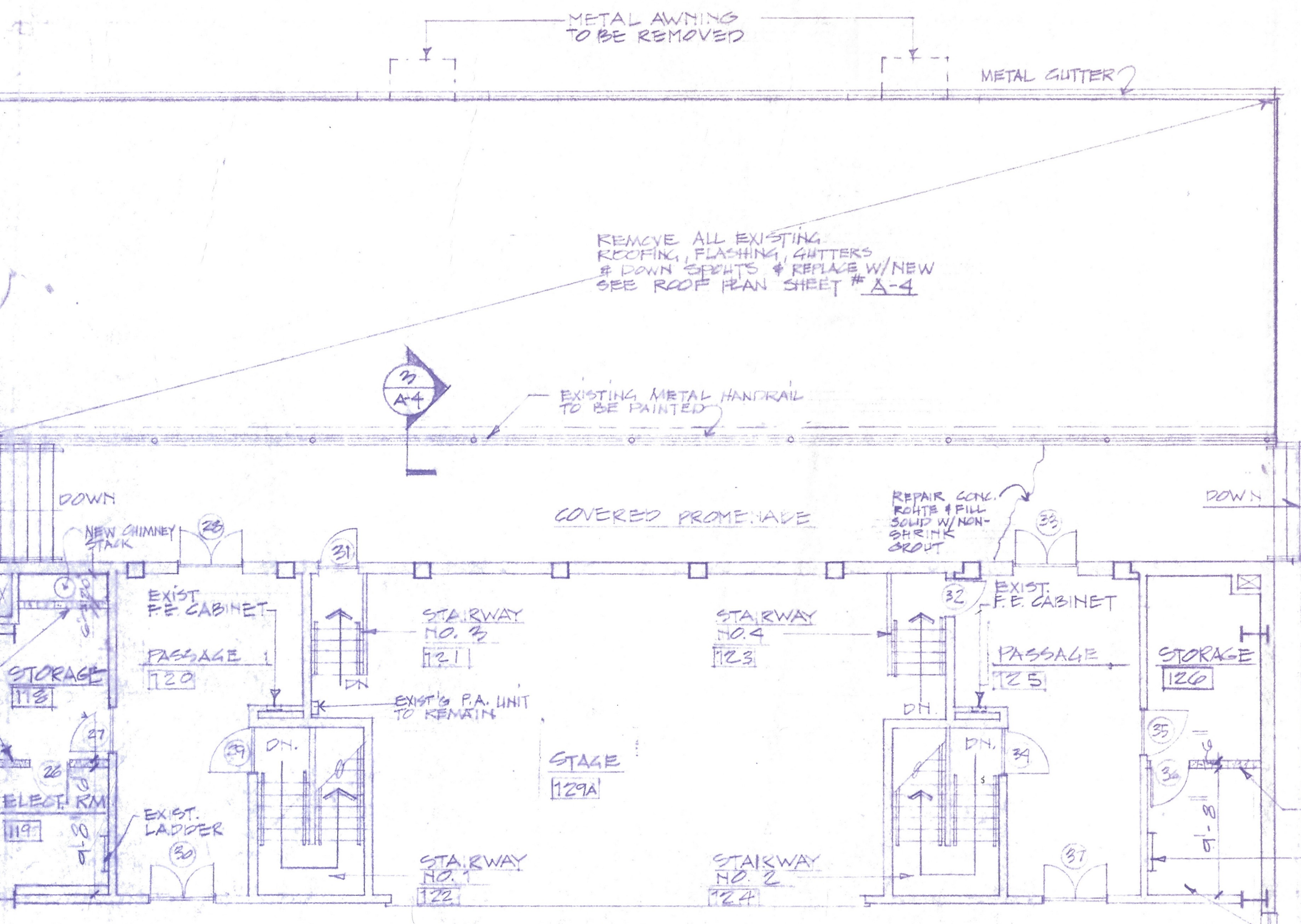
7 SHELF DET. SCALE: 3/4\"/>



FIRST FLOOR PLAN SCALE: 1/8\"/>

GENERAL NOTES
PROVIDE NEW MULTIPURPOSE DRY CHEMICAL 5# CAPACITY
UL RATED FIRE EXTINGUISHERS EXISTING F.E. CABINETS
AS SHOWN ON FLOOR PLAN FIRE EXTINGUISHER TO BE
LARGEN 65 PRODUCTS MODEL MP 5

ALTERNATE NO. 11
NEW ENTRANCE
CANOPY, SEE DET. 11



REPAIR & RESTORE BRICK MASONRY WALL
NEW 1/2\"/>

REMOVE ALL EXISTING RECOILING, FLASHING, GUTTERS & DOWN SHEETS & REPLACE W/NEW SEE ROOF PLAN SHEET # A-4

EXISTING METAL HANDRAIL TO BE PAINTED

EXISTING METAL HANDRAILS TO BE PAINTED-TYPICAL

ALL EXISTING STAIR HANDRAILS TO BE PAINTED-TYPICAL

EXISTING BASKETBALL GOAL TO REMAIN

EXISTING BLEACHERS TO REMAIN - REPLACE DAMAGED AND MISSING REPAIRS TO MATCH EXISTING - BOTH SIDES OF GYM.

EXISTING WOOD FLOORING SHALL BE SAVED AND REPAIRED TO REUSE NEW PENETRATING GYM FINISH BY DURA SEAL OR EQUAL & NEW FLOOR STRIPING (GYM & STAGE)

LIMITS OF VOLLEYBALL COURT LINES

REMOVE EXIST. W/2\"/>

REMOVE EXIST. W/2\"/>

REMOVE EXIST. W/2\"/>

REMOVE EXIST. W/2\"/>

REMOVE EXIST. W/2\"/>

REMOVE EXIST. W/2\"/>

REMOVE EXIST. W/2\"/>

REMOVE EXIST. W/2\"/>

REMOVE EXIST. W/2\"/>

REMOVE EXIST. W/2\"/>

REMOVE EXIST. W/2\"/>

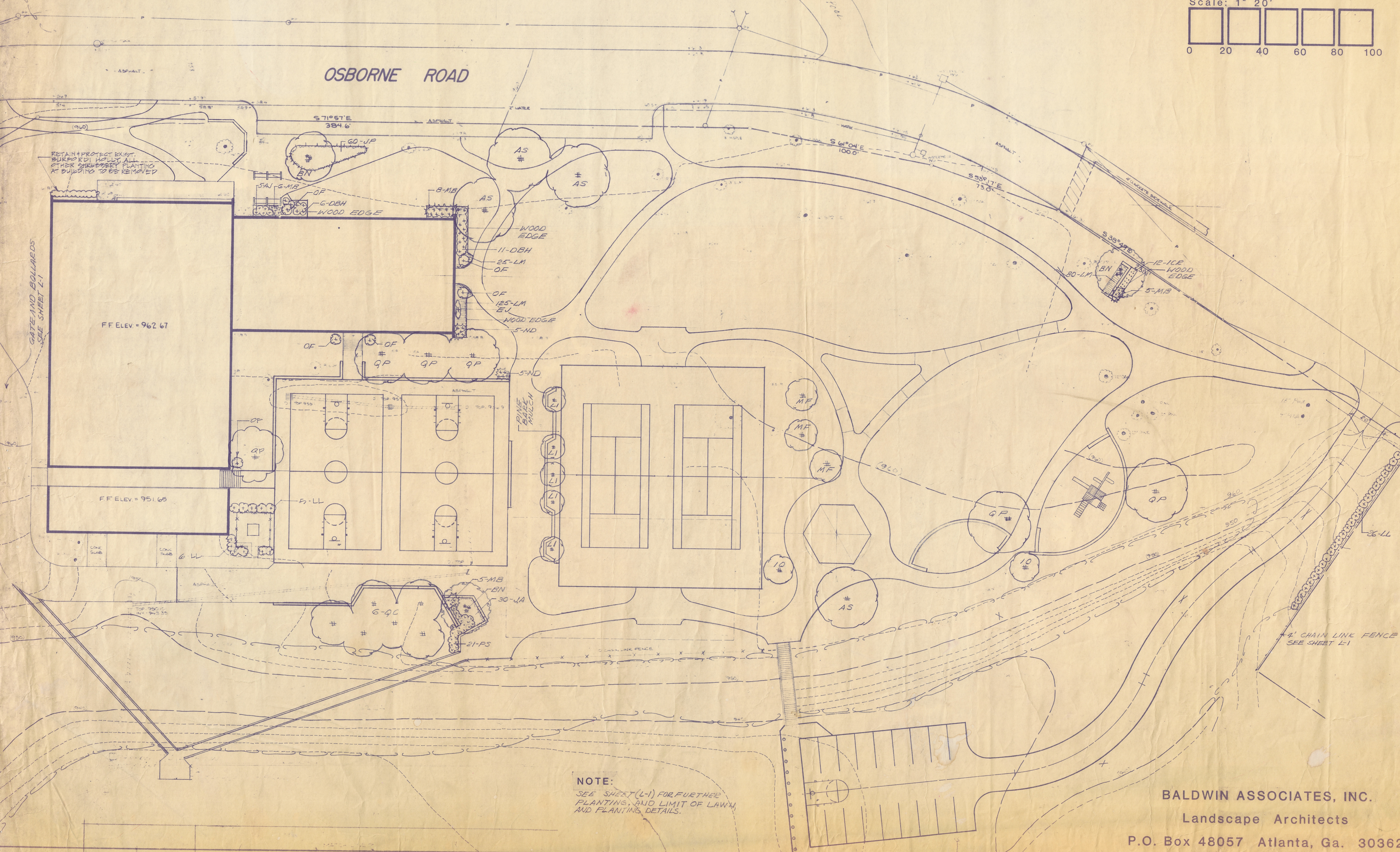
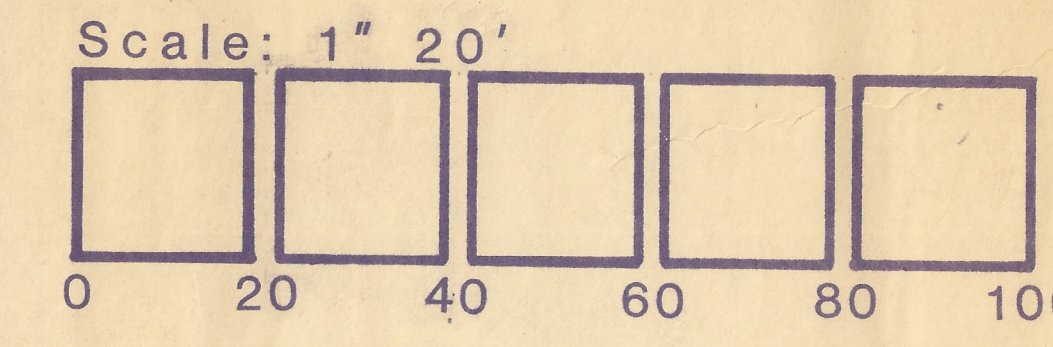
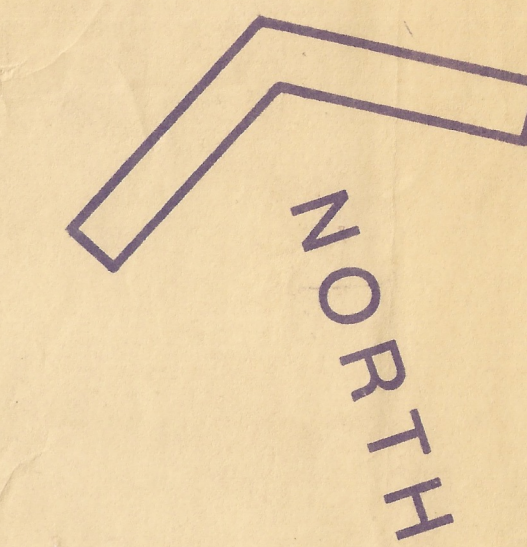
Plant List

KEY	QUANTITY	SIZE	BOTANICAL NAME	COMMON NAME
AS	9	1 1/2" - 2" CAL	ACER SACCHARUM	SUGAR MAPLE
BN	3	10" - 12"	BETULA NIGRA	RIVER BIRCH - MULTI-STEM
IO	2	6" - 7"	ILEX OPACA	AMERICAN HOLLY
LI	5	6" - 7"	LAGERSTEDERIA INDICA (R&D)	CEAPE MYRTLE
MF	3	5" - 6"	MALUS FLOREBUNDA	CRABAPPLE
QC	6	1 1/2" - 2" CAL	QUEBUS COCCINEA	SCARLET OAK
QP	7	1 1/2" - 2" CAL	QUEBUS PHELLOS	WILLOW OAK
PO	1	1 1/2" - 2" CAL	PLATANUS OCCIDENTALIS	SYCAMORE
EU	1	3" - 4"	EUIBOTRYA JAPONICA	LOQUAT
DBH	11	18" - 24"	ILEX COENUTA BURFORDI NANA	DWARF BURFORD HOLLY
ICP	12	18" - 15" CAL	ILEX COENUTA ROTUNDA	DWARF CHINESE HOLLY
JP	60	18" - 24"	JUNIPERUS CHINENSIS PRUNIFOLIA COMPACTA	'WICKS COMPACT' HOLLY
LL	217	30" - 36"	LIGUSTRUM LUCIDUM	GLOSSY LIGUSTRUM
LM	160	8" - 9" CAL	LIRIODENDRON MUSCARI	LIRIODENDRON
MB	19	18" - 24"	MALVONIA BEALEI	MAHONIA - MULTI-STEM
ND	10	18" - 24"	NANDINA DOMESTICA	NANDINA - MULTI-STEM
OF	7	36" - 42"	OSMANTHUS FORTUNEI	FORTUNE'S OSMANTHUS
PS	21	18" - 24"	PEUNUS L. SCHIPRAEENSIS	SCHIP LAUREL
ER	23	15" - 18"	ROSA RUBOSA	RUGOSA ROSE
JA	30	12" - 15" SP	JUNIPERUS HOPE PLUMOSA	ANDROEA JUNIPER
AJ	5	18" - 24"	AUCUBA JAPONICA	AUCUBA

Note
SEE SHEET L-1 FOR WOOD
EDGE AND PLANTING DETAILS.

TOPOGRAPHIC SURVEY FOR
**DEKALB COUNTY COMMUNITY DEVELOPMENT
LYNNWOOD SCHOOL RENOVATION**

LOCATED IN LAND LOT 303 18TH DISTRICT
DEKALB COUNTY, GEORGIA
SCALE: 1" = 20' DATE: _____
E. A. ANDERSON AND ASSOCIATES
Engineers-Planners-Surveyors
PHONE: 252-9988



REVISIONS

RENOVATION OF LYNNWOOD RECREATION CENTER AND PARK
DEKALB COUNTY, GEORGIA



Harris and Partners
Architects, P.C.
44 Wood St., N.W.
Suite 510
Atlanta, Georgia 30303
(404) 659-0191

PROFESSIONAL SEALS

DRAWING TITLE
PLANTING

DRAWN: ES
CHECKED: HE
DATE: 7/1/82
PROJECT NO: 8007-A
SCALE:
DRAWING NO:

BALDWIN ASSOCIATES, INC.
Landscape Architects
P.O. Box 48057 Atlanta, Ga. 30362

L-5